

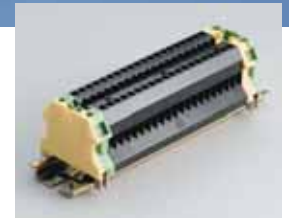
Features

- Single and multi stage protection – primary or combination primary/secondary protectors
- Single pair and 10 pair protectors
- Simple installation into Krone-LSA® disconnect block
- L-L & L-G protection – for comprehensive protection
- HSP High Speed Protectors support 8Mbit/s digital and 12MHz analog networks

The Subscriber Line Protector (SLP) and High Speed Protector (HSP) are designed for the protection of telecommunication and data circuits that terminate on 10 pair Krone-LSA plus disconnect blocks. The DIN rail mount Data Line Termination (DLT) screw terminal block allows these protectors to be used in applications where disconnect blocks are not fitted.

The SLP1 K2 is a single pair protector, suited to protection of traditional voice circuits. The SLP10K1F is a 10 pair protector for voice and high speed data circuits.

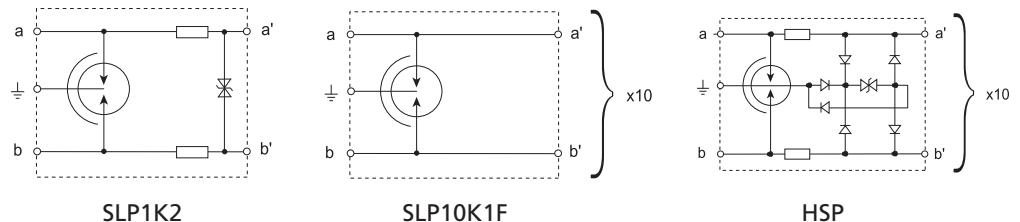
The HSP series feature multiple protection stages providing enhanced protection. The K12, 36 and 72 are low voltage units suited to industrial/signalling applications. The K230 is suited to protection of sensitive voice and high speed data circuits.



DLT (#702721) available where screw terminal connections are required (2.5 mm²)

| Model | HSP10K12 | HSP10K36 | HSP10K72 | HSP10K230 | SLP10K1F | SLP1K2* |
|---|---------------------------------------|----------|----------|--------------------|--------------------------------------|-------------|
| Item Number for Europe | 700815 | 700805 | 700850 | 700860 | 701540 | |
| Max Cont. Operating Voltage, U _c | 13 VDC | 40 VDC | 65 VDC | 190 VDC | | |
| Max Discharge Current, I _{max} | 20 kA 8/20 μs (L+L)-E | | | | | |
| Technology | Multi stage | | | | Single stage | Multi stage |
| Connection | Krone LSA Plus termination system | | | | | |
| Frequency | 12 MHz; 8 Mbits | | | | 3 MHz; 2 Mbits | |
| Dimensions H x D x W: mm (in) | 35 x 21 x 125 (1.36 x 0.83 x 4.92) | | | | 35 x 21 x 10 (1.38 x 0.83 x 0.37) | |
| Max Line Current, I _l | 150 mA | | | | 1,000 mA | 120 mA |
| Temperature | -20°C to 60°C (-4°F to 140°F) | | | | | |
| Impedance Balance | <55 dB | | | | <48 dB | |
| Insertion Loss | <0.40 dB | | | | <0.75 dB | |
| Return Loss | <20 dB | | | | <22 dB | |
| Loop Resistance | 16.4 Ω | 16.4 Ω | 6.6 Ω | 6.6 Ω | 0.2 Ω | 20.0 Ω |
| Humidity | 0 % RH to 90 % RH | | | | | |
| Approvals | C-Tick, CE | | | A-Tick, C-Tick, CE | | |

*Ground bar accessory, (P/N SLP-EB), required per 10 pair Krone-LSA block when using SLP1K2 protector.



Krone-LSA is a registered trademark of Krone GmbH.

WARNING

ERICO products shall be installed and used only as indicated in ERICO's product instruction sheets and training materials. Instruction sheets are available at www.erico.com and from your ERICO customer service representative. Improper installation, misuse, misapplication or other failure to completely follow ERICO's instructions and warnings may cause product malfunction, property damage, serious bodily injury and death.

Copyright ©2009 ERICO International Corporation. All rights reserved.

CADDY, CADWELD, CRITEC, ERICO, ERIFLEX, ERITECH, and LENTON are registered trademarks of ERICO International Corporation.



RJ11 Telephone Line Protection

Features

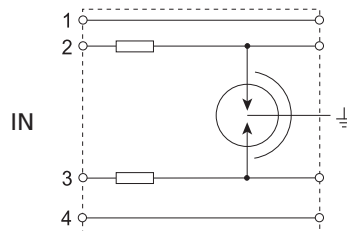
- RJ11 sockets – simple plug-in connection for 4 or 6 position RJ plugs
- 6.5" patch cord included – no additional cables required
- SLP RJ11 is UL® 497A Listed
- L-L & L-G protection – for comprehensive protection
- Automatic over-current protection

The SLP1 RJ11 series of surge suppressors are designed to provide protection to telecommunication equipment connecting via RJ11 plugs. Designed for traditional (2 wire) telephone circuits, the product is also compatible with modems and ADSL circuits.

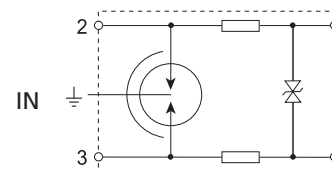
The SLP1 RJ11 is a UL Listed secondary protector intended for use in facilities where primary protective devices have been installed at the service entrance. The SLP1 RJ11A is a high-energy multi-stage primary protector intended for non UL applications where higher surge ratings are required.



| Model | SLP1RJ11 | SLP1RJ11A |
|------------------------------------|---|--------------------|
| Max Cont. Operating Voltage, U_c | <280 V | |
| Max Discharge Current, I_{max} | 500 A 8/20 μ s | 20 kA 8/20 μ s |
| Dimensions H x D x W: mm (in) | 38 x 28 x 76 (1.50 x 1.10 x 2.99) | |
| Weight: g (lbs) | 50 (0.11) | |
| Connection | 150 mm (6") 0.8 mm ² (#18AWG) with earth 4 mm ring lug 165 mm (6.5") patch cord included 6 position RJ, 2 pins protected | |
| Mounting | Adhesive backing | |
| Approvals | UL® | A-Tick |
| Voltage Protection Level, U_p | 110 V T-R 500 V @ 125 A (T+R)-G | |
| Max Line Current, I_L | 160 mA | 120 mA |
| Temperature | -40°C to 65°C (-40°F to 149°F) | |



SLP1RJ11



SLP1RJ11A

UL is a registered trademark of Underwriters Laboratories, Inc.

WARNING

ERICO products shall be installed and used only as indicated in ERICO's product instruction sheets and training materials. Instruction sheets are available at www.erico.com and from your ERICO customer service representative. Improper installation, misuse, misapplication or other failure to completely follow ERICO's instructions and warnings may cause product malfunction, property damage, serious bodily injury and death.

Copyright ©2009 ERICO International Corporation. All rights reserved.

CADDY, CADWELD, CRITEC, ERICO, ERIFLEX, ERITECH, and LENTON are registered trademarks of ERICO International Corporation.

