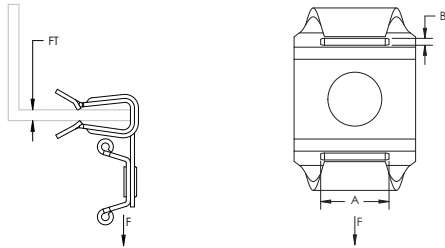


Cable Tie Holder with Inverted Flange Clip



- Used to support cables from beam flanges
- Requires only a hammer to install
- Installed at the inside of the beam to avoid accidental rip-off



Material: Spring Steel
 Finish: CADDY® ARMOUR

Part Number	Article Number	Flange Thickness FT	A	B	Static Load F
2H4CTIN	178550	2 – 3 mm	9 mm	2 mm	150 N
4H24CTIN	160470	3 – 8 mm	9 mm	2 mm	150 N
4H58CTIN	160480	8 – 14 mm	9 mm	2 mm	150 N
4H912CTIN	160490	14 – 20 mm	9 mm	2 mm	150 N

WARNING

ERICO products shall be installed and used only as indicated in ERICO's product instruction sheets and training materials. Instruction sheets are available at www.erico.com and from your ERICO customer service representative. Improper installation, misuse, misapplication or other failure to completely follow ERICO's instructions and warnings may cause product malfunction, property damage, serious bodily injury and death.

Copyright © 2015 ERICO International Corporation. All rights reserved.
 CADDY, CADWELD, CRITEC, ERICO, ERIFLEX, ERITECH, and LENTON are registered trademarks of ERICO International Corporation.

