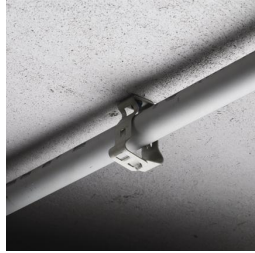
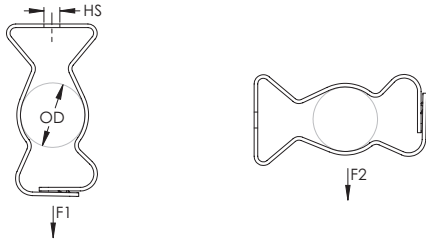


Snap Close Conduit/Pipe Clamp



- May be used for either vertical or horizontal installations
- Eliminates need for offset bending conduit
- Finger closure, no tools required



Part Number	Article Number	Outer Diameter OD	Hole Size HS	Hole Type	Static Load 1 F1	Static Load 2 F2	Certifications
Material: Spring Steel – Finish: CADDY® ARMOUR							
812M4I	–	12.7 – 19.1 mm	6.4 mm	Threaded	440 N	110 N	cULus
6M4I	–	14.0 – 18.0 mm	6.4 mm	Threaded	440 N	110 N	cULus
6M	170790	14.0 – 18.0 mm	7.0 mm	Plain	440 N	110 N	cULus
812M	177130	18.0 – 24.0 mm	7.0 mm	Plain	440 N	110 N	cULus
16M4I	–	25.4 mm	6.4 mm	Threaded	440 N	110 N	cULus
16M	170100	30.0 – 35.0 mm	7.0 mm	Plain	440 N	110 N	cULus
20M4I	–	31.8 mm	6.4 mm	Threaded	440 N	110 N	cULus
20M	170110	35.0 – 42.0 mm	7.0 mm	Plain	440 N	110 N	cULus
24M4I	–	38.1 mm	6.4 mm	Threaded	440 N	110 N	cULus
24M	170120	45.0 – 50.0 mm	7.0 mm	Plain	440 N	110 N	cULus
32M	170130	50.0 – 60.0 mm	7.0 mm	Plain	440 N	110 N	cULus
32M4I	–	50.8 mm	6.4 mm	Threaded	440 N	110 N	cULus
Material: Stainless Steel 301							
8MS1	179900	18.0 – 22.0 mm	7.0 mm	Plain	440 N	110 N	–
12MS1	179910	22.0 – 30.0 mm	7.0 mm	Plain	440 N	110 N	–

UL, UR, cUL, cUR, cULus and cURus are registered certification marks of UL LLC.

WARNING

ERICO products shall be installed and used only as indicated in ERICO's product instruction sheets and training materials. Instruction sheets are available at www.erico.com and from your ERICO customer service representative. Improper installation, misuse, misapplication or other failure to completely follow ERICO's instructions and warnings may cause product malfunction, property damage, serious bodily injury and death.

Copyright © 2015 ERICO International Corporation. All rights reserved.

CADDY, CADWELD, CRITEC, ERICO, ERIFLEX, ERITECH, and LENTON are registered trademarks of ERICO International Corporation.

