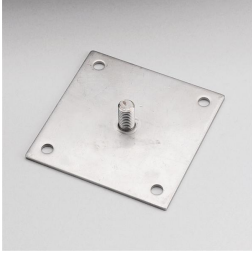
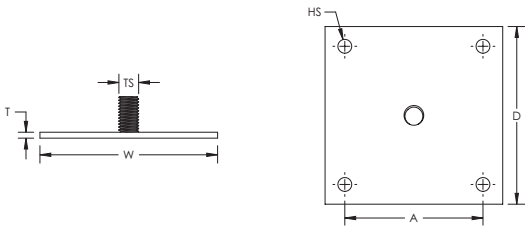


# Air Terminal Support Plate, Metric Thread



- Provides mounting point for air terminals where structural steel is the downconductor or when conductor is clamped directly to the air terminal



Material: Stainless Steel 304

Part Number	Article Number	Thread Size TS	Depth D	Width W	Thickness T	Hole Size HS	A	Unit Weight
ASP100TS	102400	M10	90 mm	90 mm	3 mm	7 mm	70 mm	0.43 kg

## WARNING

ERICO products shall be installed and used only as indicated in ERICO's product instruction sheets and training materials. Instruction sheets are available at [www.erico.com](http://www.erico.com) and from your ERICO customer service representative. Improper installation, misuse, misapplication or other failure to completely follow ERICO's instructions and warnings may cause product malfunction, property damage, serious bodily injury and death.

Copyright © 2015 ERICO International Corporation. All rights reserved.

CADDY, CADWELD, CRITEC, ERICO, ERIFLEX, ERITECH, and LENTON are registered trademarks of ERICO International Corporation.

